

KHSAA Basketball - Game Box Score

Ohio County Lady Eagles vs. Clay County Lady Tigers

Date: 03/12/09 Time: 6:30 pm Site: Diddle Arena-Bowling Green, KY Attendance: N

Visitors: Clay County Lady Tigers

##	Name	P	FG	3 Pt	FT	PTS	ORB	DRB	TR	PF	AST	TO	BS	ST	MIN
4	Natosha Gilbert		0/0	0/0	0/0	0	0	0	0	0	0	0	0	0	DNP
12	* Alisha Mitchell		1/8	0/1	1/2	3	0	1	1	5	1	5	0	0	27:58
14	* Whitney Belle Jackson		4/6	0/0	4/6	12	2	4	6	4	0	2	0	1	28:29
20	Sabrina Smith		6/8	0/0	0/0	12	1	1	2	1	1	2	0	0	17:58
21	* Jordan Phillips		5/6	0/0	2/3	12	3	7	10	4	5	5	0	3	30:42
22	* Danielle Fox		2/5	0/1	0/0	4	1	2	3	2	1	0	0	2	15:25
23	* Kayla Smith		4/6	1/2	2/4	13	0	3	3	1	3	5	0	2	27:00
30	Heather Hinkle		0/0	0/0	0/0	0	0	0	0	1	0	0	0	0	0:58
33	Ashley Hinkle		0/1	0/1	0/1	0	1	2	3	0	0	1	0	1	11:30
40	Victoria Jackson		0/0	0/0	0/0	0	0	0	0	0	0	0	0	0	DNP
42	Jessa Loughran		0/0	0/0	0/0	0	0	0	0	0	0	0	0	0	DNP
45	Kayla Burkhart		0/0	0/0	0/0	0	0	0	0	0	0	0	0	0	DNP
Team							1	2	3			1			
Totals			22/40	1/5	9/16	56	9	22	31	18	11	21	0	9	160
2 PT FG			1st Half	13/20	65.0%	2nd Half	9/20	45.0%	Game	22/40	55.0%				
3 PT FG			1st Half	1/3	33.3%	2nd Half	0/2	0.00%	Game	1/5	20.0%				
Free Throws			1st Half	3/6	50.0%	2nd Half	6/10	60.0%	Game	9/16	56.3%				

Home: Ohio County Lady Eagles

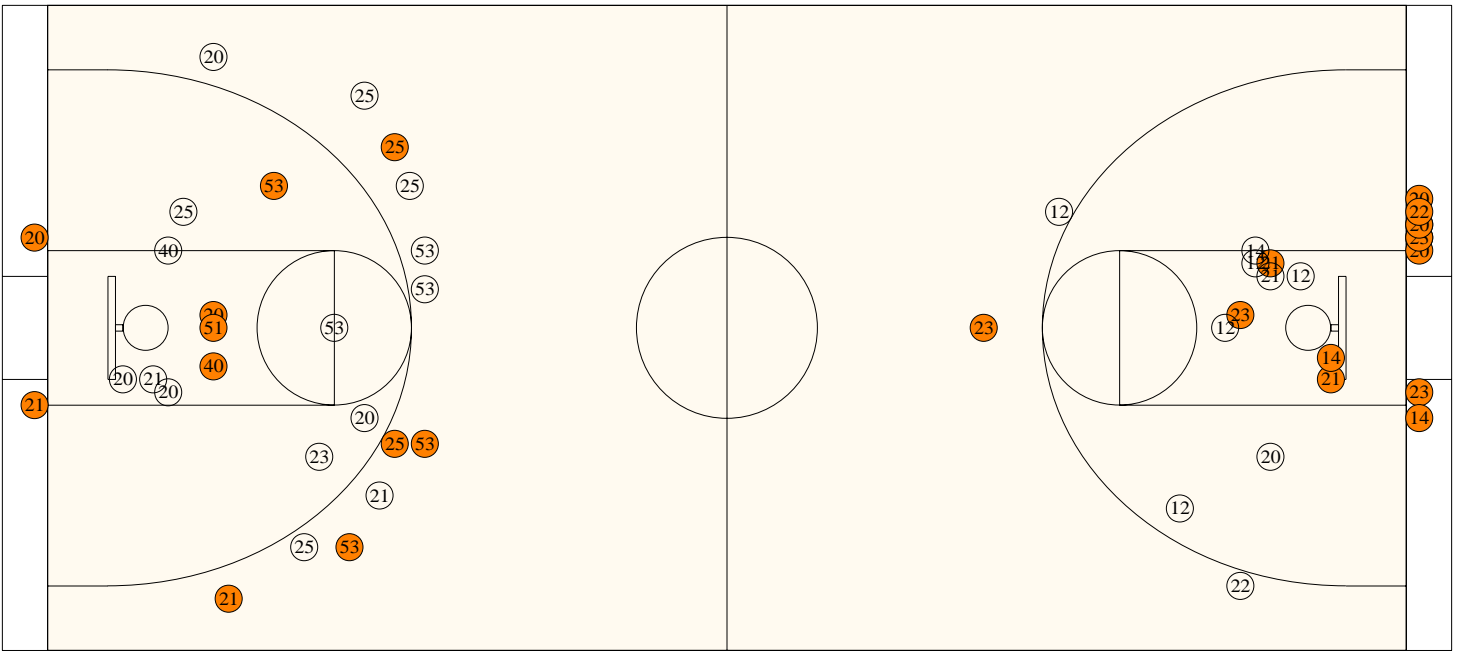
##	Name	P	FG	3 Pt	FT	PTS	ORB	DRB	TR	PF	AST	TO	BS	ST	MIN
3	Ashley Welsh		0/0	0/0	0/0	0	0	0	0	0	0	0	0	0	DNP
11	Arielle Keown		0/0	0/0	0/0	0	0	0	0	0	0	0	0	0	DNP
20	* Mariah Robinson		5/11	0/3	6/6	16	2	4	6	2	1	3	0	1	30:23
21	* Katie Henderson		1/2	1/3	3/4	8	1	0	1	2	4	1	0	2	21:19
23	Sarah Wood		0/2	0/0	1/2	1	2	2	4	1	1	2	0	1	12:52
22	Mallory Griffin		0/0	0/0	0/0	0	0	0	0	0	0	0	0	0	DNP
25	* Kaley Griffin		0/2	3/10	3/3	12	1	2	3	2	4	8	0	0	24:46
30	Allie Druin		0/0	0/0	0/1	0	0	2	2	0	0	1	0	1	6:30
31	Julie Hirtzel		0/0	0/0	0/0	0	0	0	0	0	0	0	0	0	DNP
35	Sabrina Ruby		0/0	0/0	0/0	0	0	0	0	0	0	0	0	0	0:09
40	* Joanna Jurgens		3/7	0/0	1/2	7	2	3	5	4	0	0	0	0	24:21
51	* Olivia Millsaps		1/2	0/0	2/4	4	2	2	4	3	1	0	0	0	20:26
53	Deanna Raley		1/2	3/5	0/0	11	1	0	1	3	2	0	0	0	19:14
5	Audrey Taylor		0/0	0/0	0/0	0	0	0	0	0	0	0	0	0	DNP
15	Caitlyn Loney		0/0	0/0	0/0	0	0	0	0	0	0	0	0	0	DNP
Team							2	3	5						
Totals			11/28	7/21	16/22	59	13	18	31	17	13	15	0	5	160
2 PT FG			1st Half	6/14	42.9%	2nd Half	5/14	35.7%	Game	11/28	39.3%				
3 PT FG			1st Half	5/12	41.7%	2nd Half	2/9	22.2%	Game	7/21	33.3%				
Free Throws			1st Half	2/4	50.0%	2nd Half	14/18	77.8%	Game	16/22	72.7%				

	Cl	OHIO		Cl	OHIO		Cl	OHIO
Free Throw Pts	9	16	3Pt Points	3	21	Pts/Possession	0.86	0.94
Pts off Turnovers	10	15	2nd Chance Points	8	9	Pts off Bench	12	12
Total Rebounds	31	31	Team Rebounds	3	5	Dead Ball Reb	3	1
Off Rebound %	33.3	37.1	Def Rebound %	62.9	66.7	Total Rebound %	50.0	50.0
3Pt Efficiency	-16.7	+7.1	Def. Stops	37	39	Pts/Shot	1.06	0.98
Technical Fouls	Cl	OHIO	None					
Officials	Will Jones, Charlie Chappie, Gary Wilson							

	Qtr 1	Qtr 2	Qtr 3	Qtr 4	OT 1	OT 2	OT 3	OT 4	Total
Clay County Lady Tigers	15	17	14	10	0	0	0	0	56
Ohio County Lady Eagles	12	17	14	16	0	0	0	0	59

Largest Lead OHIO 14 Cla 26 (12 pts) **Lead Changes** 6 **Number of Ties** 6
Comments: None

FIRST HALF



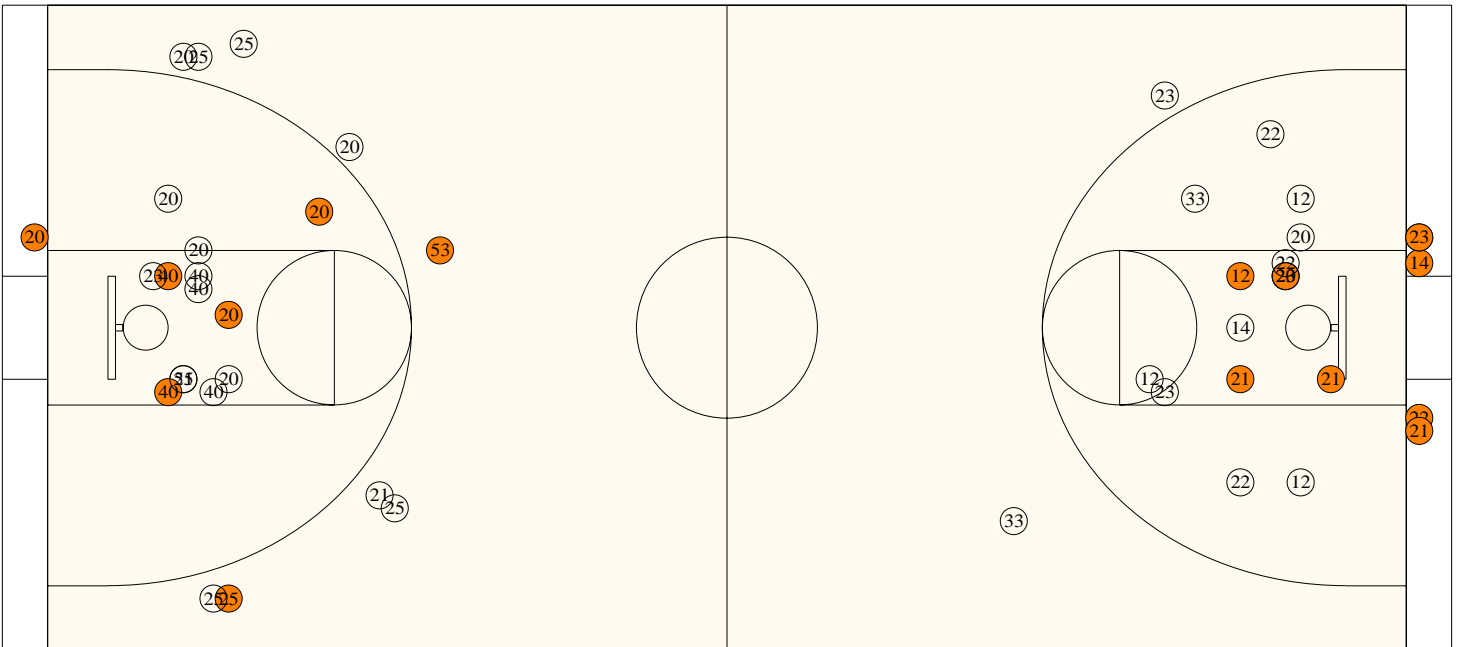
Ohio County

Shooting	Pts	Pts	Pts
2FG 6/14 (42.9%)	12	Pts/Shot	1.04
3FG 5/12 (41.7%)	15	2nd Eff Pts	5
TFG 11/26 (42.3%)		Pts off TO's	7
FT 2/4 (50.0%)	2	3Pt Eff	+13.1
Scoring Distribution: 2FG 41.4% 3FG 51.7% FT 6.9%			

Clay County

Shooting	Pts	Pts	Pts
2FG 13/20 (65.0%)	26	Pts/Shot	1.23
3FG 1/3 (33.3%)	3	2nd Eff Pts	4
TFG 14/23 (60.9%)		Pts off TO's	5
FT 3/6 (50.0%)	3	3Pt Eff	-10.0
Scoring Distribution: 2FG 81.3% 3FG 9.4% FT 9.4%			

SECOND HALF



Ohio County

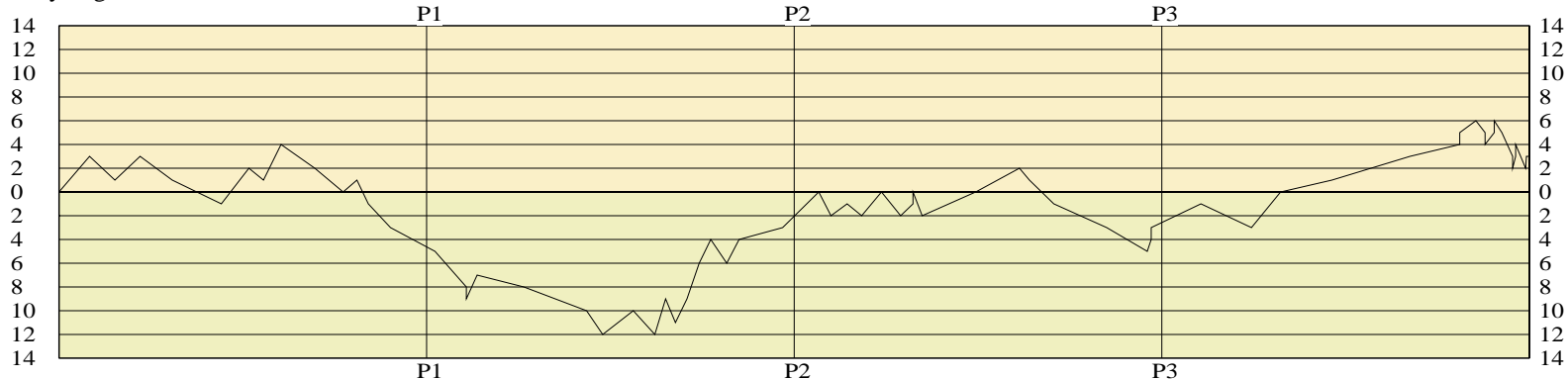
2FG 5/14 (35.7%)	10	Pts/Shot	0.94
3FG 2/9 (22.2%)	6	2nd Eff Pts	4
TFG 7/23 (30.4%)		Pts off TO's	8
FT 14/18 (77.8%)	14	3Pt Eff	-1.6
Scoring Distribution: 2FG 33.3% 3FG 20.0% FT 46.7%			

Clay County

2FG 9/20 (45.0%)	18	Pts/Shot	0.89
3FG 0/2 (0.00%)	0	2nd Eff Pts	4
TFG 9/22 (40.9%)		Pts off TO's	5
FT 6/10 (60.0%)	6	3Pt Eff	-30.0
Scoring Distribution: 2FG 75.0% 3FG 0.0% FT 25.0%			

Lady Eagles

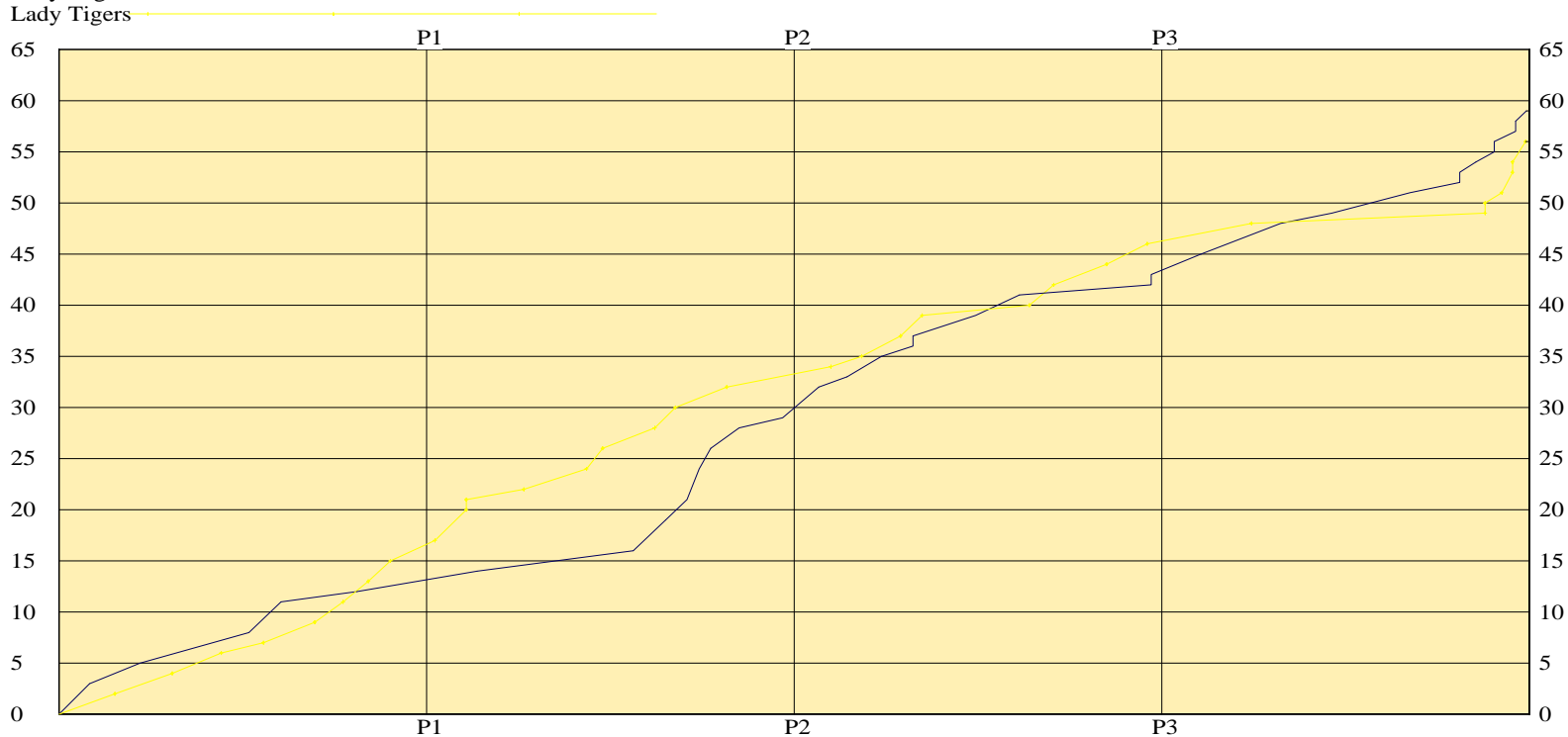
LEAD TIMELINE



Lady Tigers

Lady Eagles

SCORING TIMELINE



Largest Lead OHIO 14 Cla 26 (12 pts) Lead Changes 6 Number of Ties 6

KHSAA Basketball - Play by Play Report - Scoring Only (pg 1)
Ohio County Lady Eagles vs. Clay County Lady Tigers
Date: 03/12/09 Time: 6:30 pm Site: Diddle Arena-Bowling Green, KY Attendance: N

Name	Action	Action	Score	Clock	Diff	Name	Action	Action
K Henderson	3Pt Made	O Millsaps Assist	3-0	1 7:20	+3 (L1)			
			3-2	1 6:47	+1	J Phillips	Putback Made	
M Robinson	Layup Made	K Henderson Assist	5-2	1 6:14	+3			
			5-4	1 5:32	+1	J Phillips	FG Made	D Fox Assist
			5-6	1 4:28	-1 (L2)	W B Jackson	Putback Made	
D Raley	3Pt Made	K Griffin Assist	8-6	1 3:52	+2 (L3)			
			8-7	1 3:33	+1	A Mitchell	FT Made	
K Griffin	3Pt Made	M Robinson Assist	11-7	1 3:10	+4			
			11-9	1 2:26	+2	S Smith	Layup Made	J Phillips Assist
			11-11	1 1:49	(T1)	S Smith	Layup Made	
J Jurgens	FT Made		12-11	1 1:31	+1	J Phillips	Personal Foul	
			12-13	1 1:16	-1 (L4)	K Smith	Layup Made	J Phillips Assist
			12-15	1 0:47	-3	S Smith	Layup Made	K Smith Assist

End of Period Summary Lady Eagles 12 Lady Tigers 15

Largest Lead: Lady Eagles 11 Lady Tigers 7 (4 pts)	Lead Changes: 4 Ties: 1
Lead in Period: Lady Eagles 11 Lady Tigers 7 (4 pts)	Lead Changes: 3 Ties: 1 (this period)
2 for 4 oppo pts	Turnovers
2 for 4 pts	2nd Chances
4/13 for 30.8 %	Field Goals
1/2 for 50.0 %	Free Throws
	4 for 5 oppo pts
	2 for 4 pts
	7/12 for 58.3 %
	1/2 for 50.0 %

			12-17	2 7:49	-5	K Smith	Layup Made	
			12-20	2 7:08	-8	K Smith	3Pt Made	J Phillips Assist
K Griffin	Personal Foul		12-21	2 7:08	-9	K Smith	FT Made	
J Jurgens	FG Made	K Griffin Assist	14-21	2 6:54	-7			
O Millsaps	Personal Foul		14-22	2 5:53	-8	W B Jackson	FT Made	
			14-24	2 4:31	-10	S Smith	Layup Made	
			14-26	2 4:10	-12	S Smith	Layup Made	K Smith Assist
D Raley	FG Made	K Henderson Assist	16-26	2 3:30	-10			
			16-28	2 3:02	-12	W B Jackson	Layup Made	J Phillips Assist
D Raley	3Pt Made	S Wood Assist	19-28	2 2:48	-9			
			19-30	2 2:35	-11	D Fox	Layup Made	
K Henderson	Layup Made		21-30	2 2:20	-9			
K Griffin	3Pt Made	D Raley Assist	24-30	2 2:04	-6			
M Robinson	FG Made		26-30	2 1:49	-4			
			26-32	2 1:28	-6	K Smith	FG Made	
O Millsaps	FG Made	D Raley Assist	28-32	2 1:12	-4			
S Wood	FT Made		29-32	2 0:15	-3			

End of Period Summary Lady Eagles 29 Lady Tigers 32

Largest Lead: Lady Eagles 14 Lady Tigers 26 (12 pts)	Lead Changes: 4 Ties: 1
Lead in Period: Lady Eagles 14 Lady Tigers 26 (12 pts)	Lead Changes: 0 Ties: 0 (this period)
7 for 1 oppo pts	Turnovers
3 for 1 pts	2nd Chances
7/13 for 53.8 %	Field Goals
1/2 for 50.0 %	Free Throws
	7 for 2 oppo pts
	1 for 0 pts
	7/11 for 63.6 %
	2/4 for 50.0 %

K Griffin	3Pt Made	K Henderson Assist	32-32	3 7:28	(T2)			
			32-34	3 7:12	-2	W B Jackson	Layup Made	J Phillips Assist
O Millsaps	FT Made		33-34	3 6:51	-1	W B Jackson	Personal Foul	

KHSAA Basketball - Play by Play Report - Scoring Only (pg 2)
Ohio County Lady Eagles vs. Clay County Lady Tigers
Date: 03/12/09 Time: 6:30 pm Site: Diddle Arena-Bowling Green, KY Attendance: N

Name	Action	Action	Score	Clock	Diff	Name	Action	Action
			33-35	3	6:32 -2	J Phillips	FT Made	
J Jurgens	FG Made		35-35	3	6:06 (T3)			
			35-37	3	5:41 -2	D Fox	Layup Made	
K Henderson	FT Made		36-37	3	5:25 -1			
K Henderson	FT Made		37-37	3	5:25 (T4)			
			37-39	3	5:13 -2	W B Jackson	Layup Made	S Smith Assist
M Robinson	Layup Made		39-39	3	4:03 (T5)			
M Robinson	FG Made	K Griffin Assist	41-39	3	3:06 +2 (L5)			
			41-40	3	2:53 +1	W B Jackson	FT Made	
			41-42	3	2:21 -1 (L6)	A Mitchell	FG Made	
			41-44	3	1:12 -3	S Smith	FG Made	K Smith Assist
			41-46	3	0:19 -5	K Smith	Layup Made	A Mitchell Assist
M Robinson	FT Made		42-46	3	0:14 -4			
M Robinson	FT Made		43-46	3	0:14 -3			

End of Period Summary Lady Eagles 43 Lady Tigers 46

Largest Lead: Lady Eagles 14 Lady Tigers 26 (12 pts)

Lead in Period: Lady Eagles 41 Lady Tigers 46 (5 pts)

**2 for 2 oppo pts
4 for 2 pts
4/13 for 30.8 %
5/6 for 83.3 %**

**Turnovers
2nd Chances
Field Goals
Free Throws**

**Lead Changes: 6 Ties: 5
Lead Changes: 2 Ties: 4 (this period)
5 for 2 oppo pts
3 for 2 pts
6/11 for 54.5 %
2/4 for 50.0 %**

J Jurgens	FG Made	K Griffin Assist	45-46	4	7:09 -1			
			45-48	4	6:03 -3	J Phillips	FG Made	
D Raley	3Pt Made	K Henderson Assist	48-48	4	5:25 (T6)			
O Millsaps	FT Made		49-48	4	4:18 +1 (L7)			
M Robinson	FG Made		51-48	4	2:36 +3			
M Robinson	FT Made		52-48	4	1:31 +4	D Fox	Personal Foul	
M Robinson	FT Made		53-48	4	1:31 +5			
K Griffin	FT Made		54-48	4	1:10 +6			
D Raley	Personal Foul		54-49	4	0:58 +5	W B Jackson	FT Made	
			54-50	4	0:58 +4	W B Jackson	FT Made	
K Griffin	FT Made		55-50	4	0:46 +5			
K Griffin	FT Made		56-50	4	0:46 +6			
			56-51	4	0:36 +5	K Smith	FT Made	
			56-53	4	0:22 +3	J Phillips	Layup Made	
D Raley	Personal Foul		56-54	4	0:22 +2	J Phillips	FT Made	
M Robinson	FT Made		57-54	4	0:18 +3			
M Robinson	FT Made		58-54	4	0:18 +4			
			58-56	4	0:05 +2	J Phillips	Putback Made	
K Henderson	FT Made		59-56	4	0:04 +3			

End of Period Summary Lady Eagles 59 Lady Tigers 56

Largest Lead: Lady Eagles 14 Lady Tigers 26 (12 pts)

Lead in Period: Lady Eagles 54 Lady Tigers 48 (6 pts)

**4 for 3 oppo pts
4 for 2 pts
3/10 for 30.0 %
9/12 for 75.0 %**

**Turnovers
2nd Chances
Field Goals
Free Throws**

**Lead Changes: 7 Ties: 6
Lead Changes: 1 Ties: 1 (this period)
5 for 6 oppo pts
3 for 2 pts
3/11 for 27.3 %
4/6 for 66.7 %**

OFFICIAL BASKETBALL BOX SCORE

03/12/09 6:30 pm

Diddle Arena
Bowling Green, KY

Clay County Lady Tigers vs Ohio County Lady Eagles

Final Box Score

No.	Clay County Lady Tigers	Total FG		3-point		Free throw		Rebounds			F	TP	A	TO	BLK	STL	MIN
		FG	FGA	FG	FGA	FT	FTA	Off	Def	Tot							
4	Natosha Gilbert	0	0	0	0	0	0	0	0	0	0	0	0	0	0	0	DNP
12	Alisha Mitchell	1	9	0	1	1	2	0	1	1	5	3	1	5	0	0	27:58
14	Whitney Belle Jackson	4	6	0	0	4	6	2	4	6	4	12	0	2	0	1	28:29
20	Sabrina Smith	6	8	0	0	0	0	1	1	2	1	12	1	2	0	0	17:58
21	Jordan Phillips	5	6	0	0	2	3	3	7	10	4	12	5	5	0	3	30:42
23	Kayla Smith	5	8	1	2	2	4	0	3	3	1	13	3	5	0	2	27:00
22	Danielle Fox	2	6	0	1	0	0	1	2	3	2	4	1	0	0	2	15:25
33	Ashley Hinkle	0	2	0	1	0	1	1	2	3	0	0	0	1	0	1	11:30
30	Heather Hinkle	0	0	0	0	0	0	0	0	0	1	0	0	0	0	0	0:58
40	Victoria Jackson	0	0	0	0	0	0	0	0	0	0	0	0	0	0	0	DNP
42	Jessa Loughran	0	0	0	0	0	0	0	0	0	0	0	0	0	0	0	DNP
45	Kayla Burkhart	0	0	0	0	0	0	0	0	0	0	0	0	0	0	0	DNP
Team (Included in Totals)								1	2	3							
Totals		23	45	1	5	9	16	9	22	31	18	56	11	21	0	9	160
Total FG%: 1st half 14 - 23 (60.9%) 2nd half 9 - 22 (40.9%) Game 23 - 45 (51.1%) 3Pt FG%: 1st half 1 - 3 (33.3%) 2nd half 0 - 2 (0.00%) Game 1 - 5 (20.0%) FT%: 1st half 3 - 6 (50.0%) 2nd half 6 - 10 (60.0%) Game 9 - 16 (56.3%)												Deadball rebounds 3					

No.	Ohio County Lady Eagles	Total FG		3-point		Free throw		Rebounds			F	TP	A	TO	BLK	STL	MIN
		FG	FGA	FG	FGA	FT	FTA	Off	Def	Tot							
3	Ashley Welsh	0	0	0	0	0	0	0	0	0	0	0	0	0	0	0	DNP
11	Arielle Keown	0	0	0	0	0	0	0	0	0	0	0	0	0	0	0	DNP
20	Mariah Robinson	5	14	0	3	6	6	2	4	6	2	16	1	3	0	1	30:23
21	Katie Henderson	2	5	1	3	3	4	1	0	1	2	8	4	1	0	2	21:19
23	Sarah Wood	0	2	0	0	1	2	2	2	4	1	1	1	2	0	1	12:52
25	Kaley Griffin	3	12	3	10	3	3	1	2	3	2	12	4	8	0	0	24:46
40	Joanna Jurgens	3	7	0	0	1	2	2	3	5	4	7	0	0	0	0	24:21
51	Olivia Millsaps	1	2	0	0	2	4	2	2	4	3	4	1	0	0	0	20:26
53	Deanna Raley	4	7	3	5	0	0	1	0	1	3	11	2	0	0	0	19:14
30	Allie Druin	0	0	0	0	0	1	0	2	2	0	0	0	1	0	1	6:30
35	Sabrina Ruby	0	0	0	0	0	0	0	0	0	0	0	0	0	0	0	0:09
22	Mallory Griffin	0	0	0	0	0	0	0	0	0	0	0	0	0	0	0	DNP
31	Julie Hirtzel	0	0	0	0	0	0	0	0	0	0	0	0	0	0	0	DNP
5	Audrey Taylor	0	0	0	0	0	0	0	0	0	0	0	0	0	0	0	DNP
15	Caitlyn Loney	0	0	0	0	0	0	0	0	0	0	0	0	0	0	0	DNP
Team (Included in Totals)								2	3	5							
Totals		18	49	7	21	16	22	13	18	31	17	59	13	15	0	5	160
Total FG%: 1st half 11 - 26 (42.3%) 2nd half 7 - 23 (30.4%) Game 18 - 49 (36.7%) 3Pt FG%: 1st half 5 - 12 (41.7%) 2nd half 2 - 9 (22.2%) Game 7 - 21 (33.3%) FT%: 1st half 2 - 4 (50.0%) 2nd half 14 - 18 (77.8%) Game 16 - 22 (72.7%)												Deadball rebounds 1					

Technical Fouls: None

Attendance: N

Officials: Will Jones, Charlie Chappie, Gary Wilson

Score by Period	1st	2nd	3rd	4th	Final	Record	Overall Conf
Clay County Lady Tigers	15	17	14	10	56	Lady Tigers	
Ohio County Lady Eagles	12	17	14	16	59	Lady Eagles	

Lady Eagles	Lady Tigers	Lady Eagles	Lady Tigers	Lady Eagles	Lady Tigers
Points off Turnovers	15	10	Second Effort Points	9	8
Points in the Paint	12	42	3 Point Points	21	3
3pt Efficiency	+7.1	-16.7	Points/Shot	0.98	1.06
Largest Lead	14	26 (12 pts)	Lead Changes	6	
			Bench Points	12	12
			Free Throw Points	16	9
			Defensive Stops	39	37
			Number of Ties	6	

Game comments: None